



Application News

From Ramsey Products Corporation

Cutoff Saw Drive for Sawmill Operation

Application:

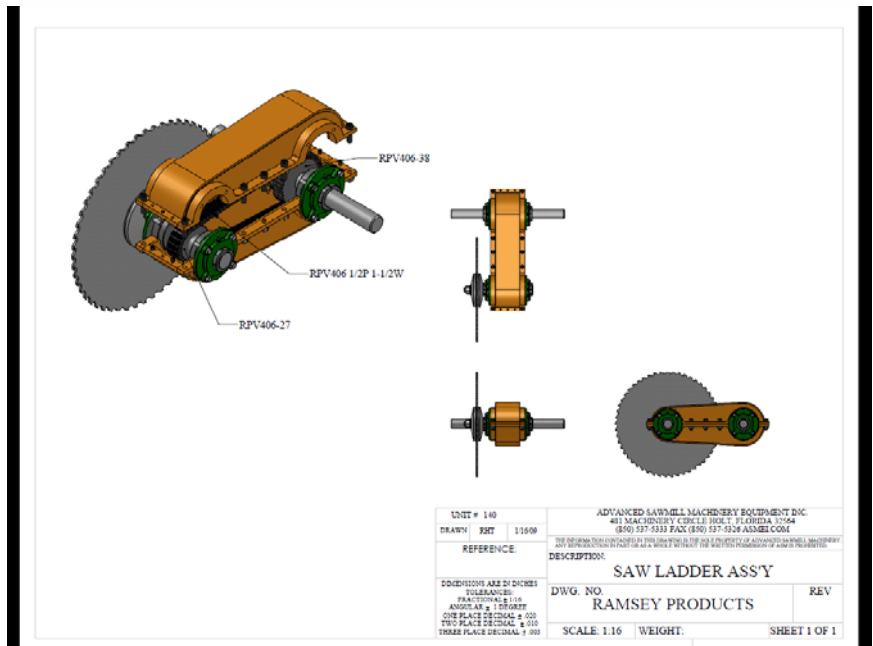
- Circular Saw Drive.
- 75 HP @ 2600 RPM.
- 1.4:1 Speed Up Ratio

Components Selected:

- Ramsey RPV406 Chain.
- 27T & 38T RPV Sprockets

Description:

New cut off saw drives for a sawmill operation required reliability and high performance. Ramsey RPV chain and sprockets met the requirements. Ramsey offered custom manufactured components made to the customer's specifications.



Contact Ramsey Products for assistance with your application. We will provide a no obligation review of your drive requirements.

The Source for Silent Chain and Sprockets <http://ramseychain.com>

Ramsey Products Corporation

135 Performance Drive
Belmont, North Carolina 28012
Phone: 704-394-0322

Fax: 704-394-9134
Email: Sales@ramseychain.com
<http://ramseychain.com>



Ramsey Products
CORPORATION