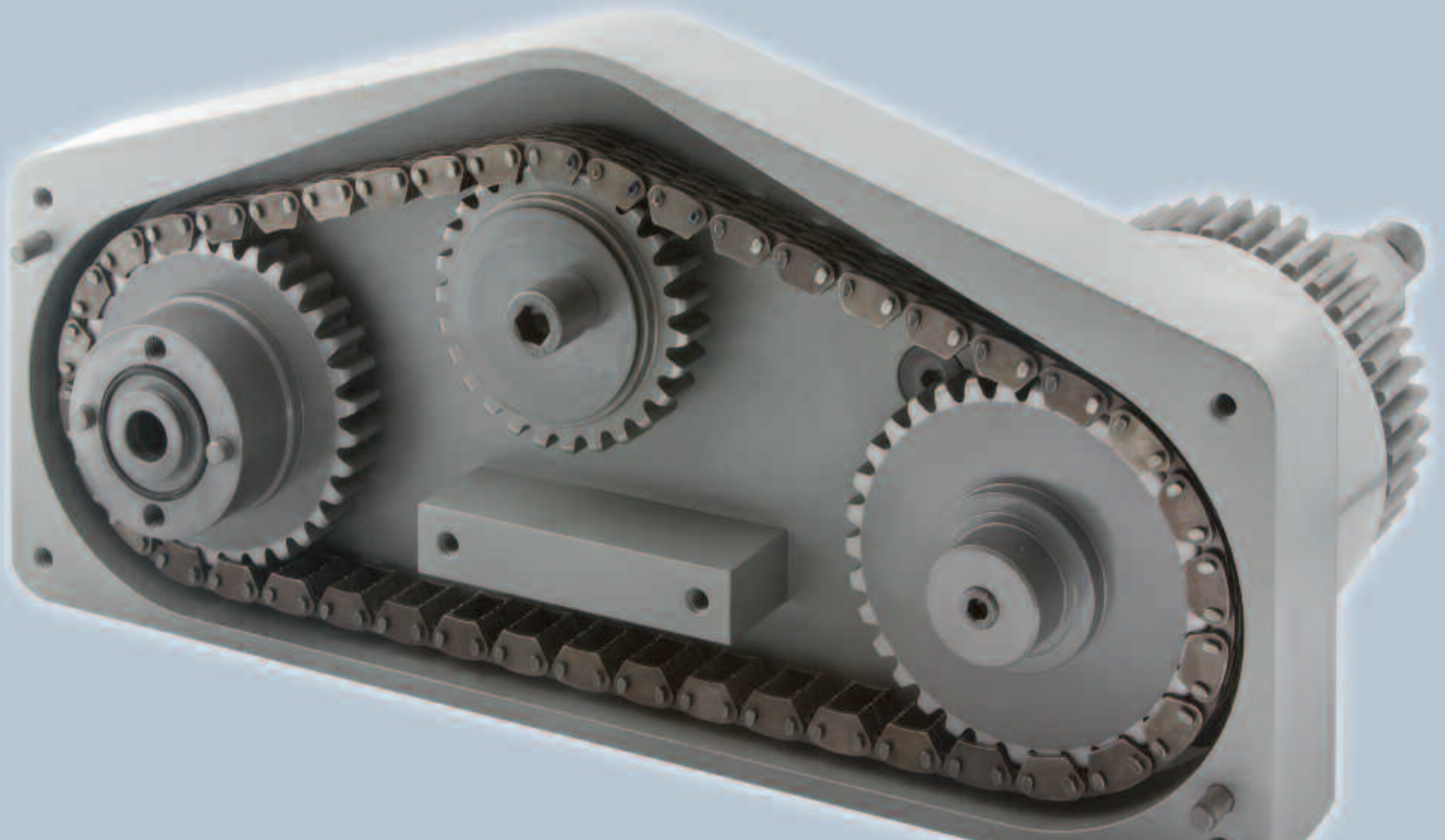


RAMSEY

# Take Out Arm Drives



FOR INDEPENDENT SECTION (IS) MACHINES



# Improving Take Out Arm Performance

*Ramsey Products has engineered a new solution for take out arms that virtually eliminates downtime caused by belt breakage. This field and factory tested, low maintenance solution increases productivity and reduces mishandling on nearly all industry IS machines.*

*IS machines rely on take out arms to efficiently and accurately transfer hollow glassware from the mold to the dead plate. When functioning properly, the take out arm is synchronized with blow molds and glassware is uniformly spaced on the conveyor. As production rates and line speeds increase, the proper functioning of the take out arm becomes especially critical. A common problem with belt driven take out arms is the loss of synchronization due to belt slip or failure. This results in irregular product spacing, increased breakage, decreased throughput, and increased maintenance downtime.*

*Working jointly with glass industry engineers, Ramsey Products has developed a new solution that greatly extends the life of take out arm drives. Utilizing high performance RPV silent chain in place of heat sensitive drive belts, Ramsey's take out arm drives can provide more than 10 times the life of a typical belt driven arm. And, because Ramsey drives are made from hardened steel components, stretch is eliminated and precision registration is maintained throughout the life of a drive. The bottom line is a solution that provides years of trouble free service compared to only weeks or months. Downtime and maintenance costs are reduced, while production output is increased.*

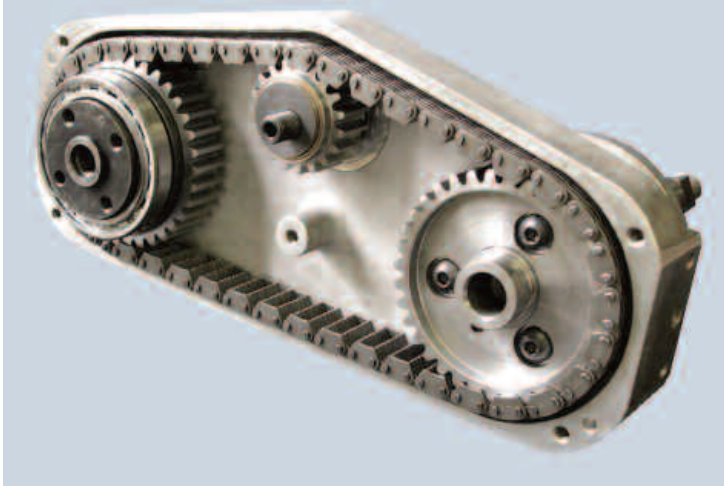
## RAMSEY TAKE OUT ARMS... TAKE OUT DOWNTIME

Ramsey take out arm drives are available in component kits for retrofitting in existing take out arm housings, or as a complete new assembly. Both kits and complete take out arms utilize high performance RPV silent chain and sprockets to greatly extend drive life and dramatically reduce maintenance costs. Field tests have shown that Ramsey take out arm drive life is often more than 10 times that provided by drives using heat sensitive belts. Also, with Ramsey take out arm drives the need for frequent adjustment is virtually eliminated. Drives can be equipped with optional shear pin sprockets to provide overload protection, and all Ramsey take out arms are dynamically tested prior to shipment.

## FEATURES

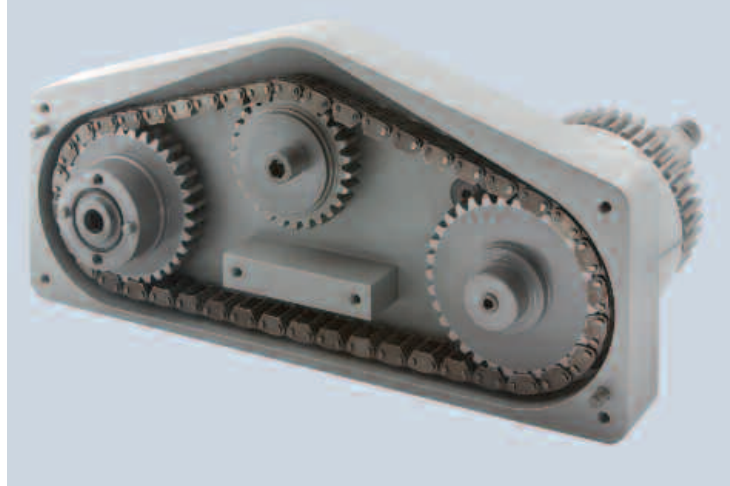
- Fully compatible with most IS machines
- Greatly improved drive life
- Reduced downtime and maintenance
- Complete drive or retrofit kits available
- Suitable for 4.25" to 9.25" bottle spacing
- Built in overload protection option
- Fully tested before shipment

RETROFIT KIT



Retrofit kits convert older, belt driven take out arms to high performance RPV chain drives.

COMPLETE TAKE OUT ARM



Complete Ramsey take out arms are shipped ready for use in their own drive housing.



Ramsey take out arms provide years of trouble free service, compared to only weeks or months for typical belt drives.

## TAKE OUT ARM RETROFIT KITS SAVE MONEY

Ramsey retrofit kits allow take out arms from other manufacturers to be converted to RPV silent chain drives. Kits provide all of the internal components that are necessary to convert an existing take out arm to a Ramsey chain driven take out arm. The kit is installed in an existing take out arm housing, so there is no need to buy a new housing. This provides an economical alternative for customers that wish to improve the performance of existing take out arms, rather than purchasing a complete new drive unit. Kits are available to convert take out arms from most major manufacturers.

## COMPLETE TAKE OUT ARMS FIT MOST IS MACHINES

Ramsey take out arm systems are complete drive solutions. They are designed to completely replace alternative take out arms, and are shipped ready for use in their own drive housing. Because they are designed specifically for use with high performance RPV chain and sprockets, Ramsey take out arm systems are often more compact than take out arms from other manufacturers.

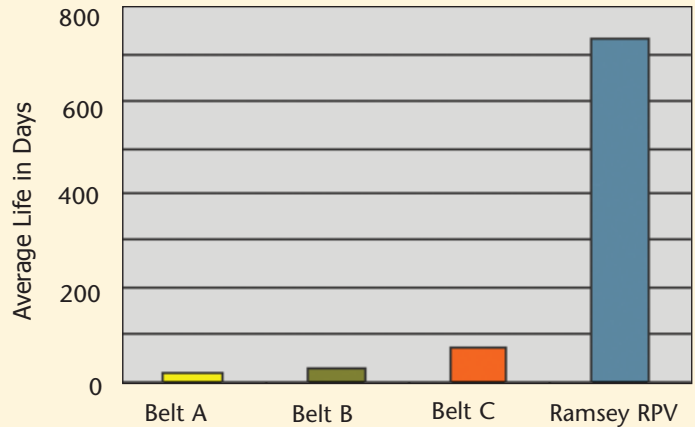
## PAYBACK TIME MEASURED IN MONTHS

Take out arm malfunction, or failure, leads to costly downtime, product loss, and maintenance. Because Ramsey drives provide extended, maintenance free, drive life, all of these costs are greatly reduced. In many cases, take out arms retrofitted with Ramsey drives produce a positive return on investment in only a few months. With this kind of results, it is often easy to justify upgrading existing drives.

## HOW MUCH CAN YOU SAVE?

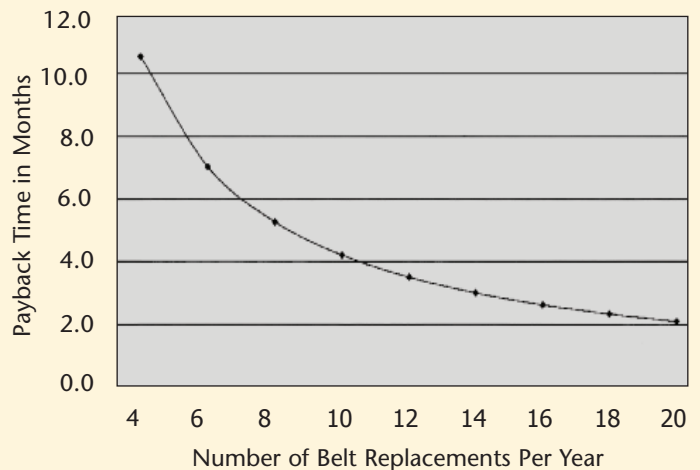
Because they last longer, Ramsey drives can dramatically reduce the costs associated with frequent belt drive replacement. How often do you have to replace take out arm drive belts? Examine the charts provided to estimate how much you can save by retrofitting with a Ramsey drive.

## COMPARING DRIVE LIFE

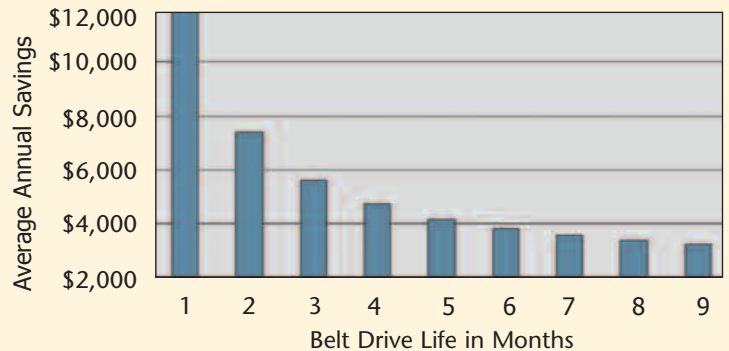


Results based on retrofitted 6 1/4" Ramsey take out arm in a high production bottling plant.

## RAMSEY DRIVE PAYBACK TIME



## ANNUAL SAVINGS ON TEN SECTION MACHINE



Results based on belt and chain replacement costs only. The annual savings due to reduced downtime would be even greater.

## PROVEN RESULTS

Years of testing on high production glass lines have shown that no belt driven take out arm provides the durability and life of a Ramsey take out arm drive. Ramsey drives outlast even the highest quality belt drive. This directly translates to greatly extended periods of maintenance free, trouble free operation.

In addition to being field tested and field proven, each Ramsey take out arm is dynamically tested in our production test facility before shipment.



Manufacturer	Bottle Spacing	Ramsey Base Kit p/n
Hartman and Bender	5	TOA KIT 5 A-58370 SHP
Hartman and Bender	5-1/2	TOA KIT 5-1/2 A-58374 SHP
Hartman and Bender	4-1/4	TOA KIT 4-1/4 A-58413 SHP
Hartman and Bender	6-1/4	TOA KIT 6-1/4 A-58640
Latimer	5	TOA KIT 5 A-58270
Latimer	8-1/2	TOA KIT 8-1/2 A-58357
Latimer	8-1/2	TOA KIT 8-1/2 A-58385 SHP
Latimer	5-1/2 / 6-1/4	TOA KIT 6-1/4 A-58269
Latimer	5-1/2 / 6-1/4	TOA KIT 6-1/4 A-58341 SHP
Owens Illinois	5 / 7	TOA KIT 7 A-58315
Owens Illinois	5-1/2 / 6-1/4 / 8-1/2	TOA KIT 8-1/2 A-58377
Owens Illinois	5-1/2 / 6-1/4 / 8-1/2	TOA KIT 8-1/2 A-58634 SHP
Owens Illinois	9-1/4 / 10	TOA KIT 9-1/4 A-58316
Owens Illinois	9-1/4 / 10	TOA KIT 9-1/4-10 A-58342
Owens Illinois	9-1/4 / 10	TOA KIT 9-1/4-10 A-58622 SHP

For more information on Ramsey products, visit our website: [www.ramseychain.com](http://www.ramseychain.com).

Printed in U.S.A.  
Catalog TOA3.11



Ramsey Products Corporation  
P.O. Box 668827  
Charlotte, NC 28266-8827  
Ship To: 135 Performance Drive  
Belmont, NC 28012  
Tel: (704) 394-0322  
Fax: (704) 394-9134  
[www.ramseychain.com](http://www.ramseychain.com)  
[sales@ramseychain.com](mailto:sales@ramseychain.com)



Ramsey Products Europe  
Lansinkesweg 4-003  
7553 AE Hengelo (Ov)  
P.O. Box 960  
7550 AZ Hengelo (Ov)  
The Netherlands  
Ph +31 (0) 742503308  
Fax +31 (0) 742506485  
[Euro.sales@ramseychain.com](mailto:Euro.sales@ramseychain.com)

For over 40 years, Ramsey has been supplying chain to the international market. Our goal is to provide the widest range of top quality Inverted tooth chains, unmatched service and competitive prices. Please contact Ramsey and let us show you how we can help enhance your growth and success.