

# Ramsey Lifeguard® Wear Protected Conveying Chain



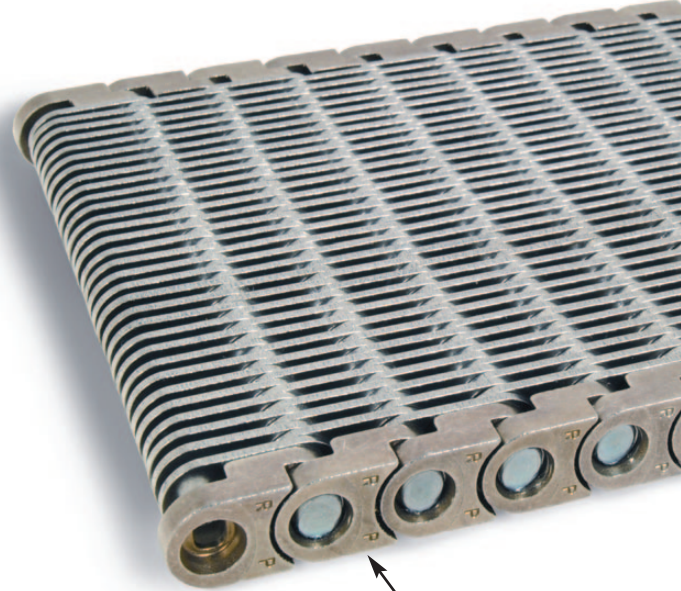
## Advantages

Lifeguard conveying chains offer the most complete protection against lateral chain and pin head wear. Available exclusively from Ramsey, Lifeguard is patented in the United States and Europe.

**Superior Wear Protection**  
Recessed pin heads guard against wear and prevent chain snagging on lateral guides. Both chain life and product handling is improved.

**Smoother Conveying Surface**  
Unique, patented, interlocking side links greatly reduce the size of gaps between adjacent side plates, resulting in smoother product transfer on and off the conveying surface.

**Trouble Free Chain Guiding**  
Lifeguard links allow chains to be run in direct contact with lateral guides. This creates fewer wear handling problems and simplifies chain guiding.

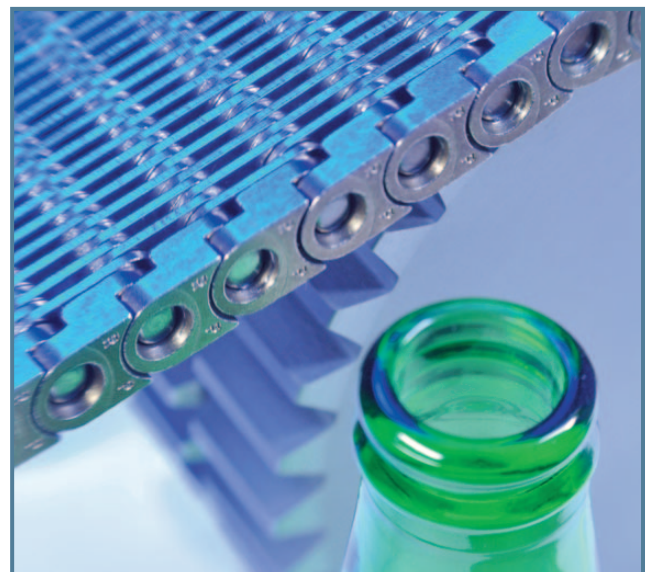


Interlocking links minimize gaps and improve product stability during transfer.

*Lifeguard® chain has earned numerous patents in the United States and Europe.*

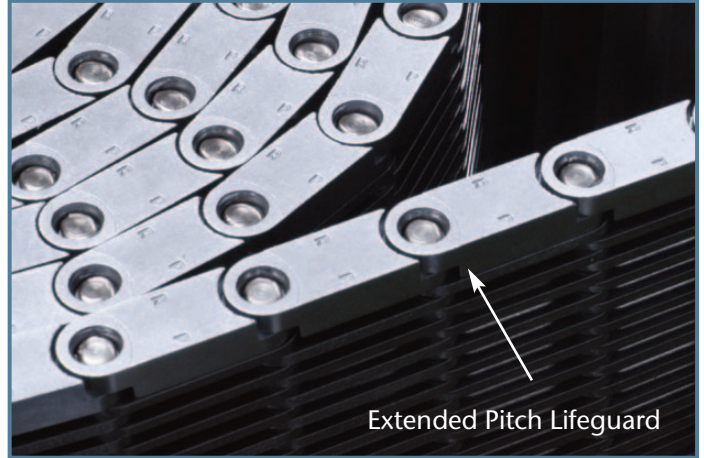
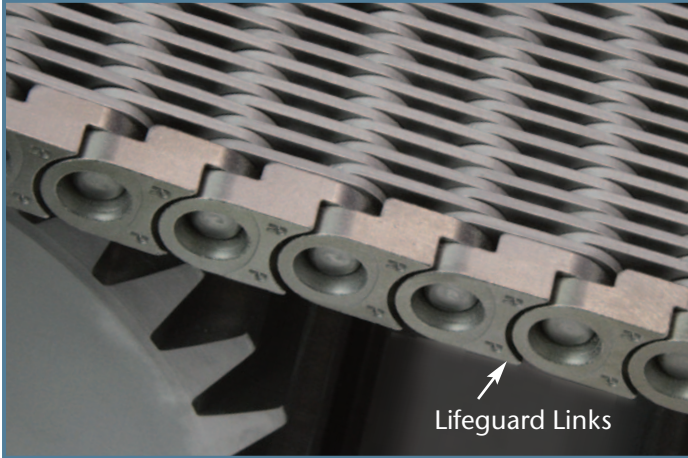
## Options

- Available in 1/2 inch and 1 inch pitch
- Chain widths from less than 1 inch to over 20 inches
- Assemblies include: all links (maximum surface area), link-spacer construction (reduced weight and enhanced cooling), or double stacked (better air flow and bottle cooling)
- Available in side guide or center guide, double guard (guard links on both sides of the chain) or single guard (a less expensive option)
- Chain surfaces can be ground for the ultimate in smooth transport
- Compatible with standard Ramsey sprockets



continued on back

# Lifeguard® Chains Are Also Available in Stainless Steel



## Quote Request Summary

Use this form for a quick cost estimate.

- 1) Quantity: \_\_\_\_\_ meters or \_\_\_\_\_ feet
- 2) Pitch:  12.7mm (1/2")  25.4mm (1")
- 3) Overall Chain Width: \_\_\_\_\_ mm or \_\_\_\_\_ inches
- 4) Guide Type:  Center Guide  Side Guide  Multiguide
- 5) Construction:  All Links  Link & Spacer  Double Link
- 6) Grinding:  None  Top Only  Top & Bottom

Additional Comments: