

RKO - Ramsey Knock Out Tool®



Advantages

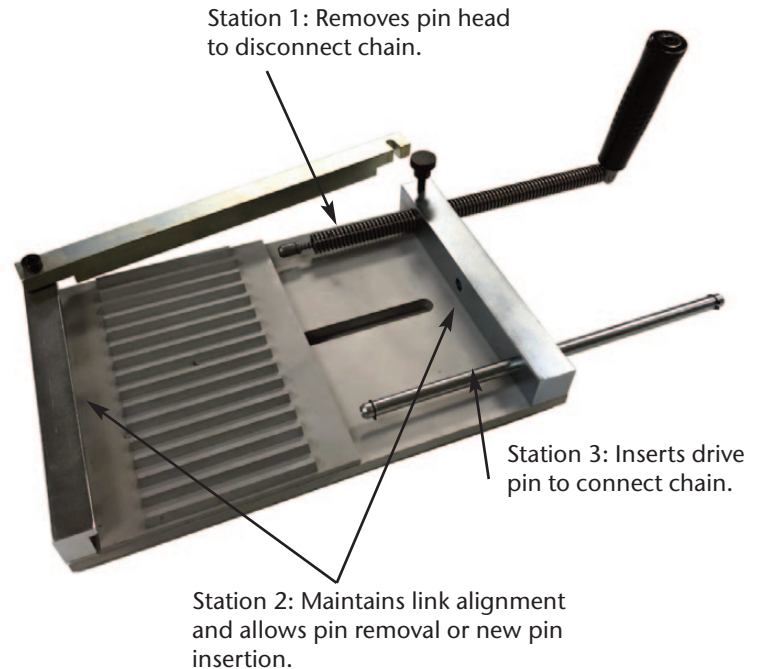
The RKO Tool, or “Ramsey Knock Out” Tool, greatly simplifies connecting and disconnecting all Ramsey conveying chains which use a single pin joint. The tool is especially beneficial with wear protected chains, including Allguard, Lifeguard, and All-Steel chains.

Saves Time and Prevents Damage
When installing or replacing chains, the tool minimizes lost time and the chance of costly chain damage.

A Durable Production Tool
RKO tools are designed and built to be used on the plant floor.

Three Distinct Work Stations

- First station uses a ram screw to remove the pin head.
- Second station maintains link alignment and allows pin removal or new pin insertion.
- Third station provides for insertion of drive pin chain connector. Note: Optional drive pin connectors must be purchased separately.



The Ramsey Knock Out Tool® is patented in the United States and Europe.

Available Only From Ramsey

Options

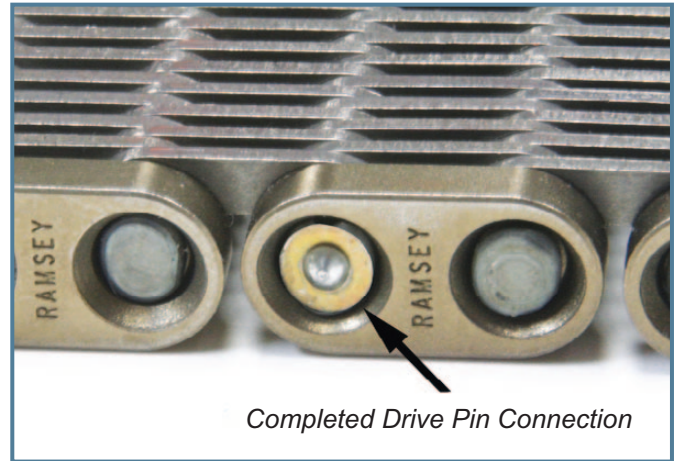
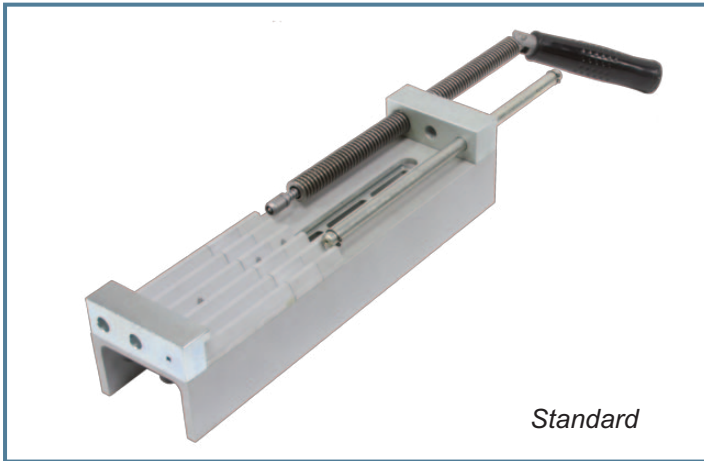
- Two available styles: Standard and Wide-Body
- Modular guide plates allow for many different chain widths and styles
- Replacement parts available



Wide-Body

continued on back

Eliminates the Need for Damaging Hammering or Welding



Quote Request Summary

Use this form for a quick cost estimate.

- 1) Style: Standard Wide-Body
- 2) Chain Type: Ultralife Allguard Lifeguard All-Steel
- 3) Overall Chain Width: _____ mm or _____ inches
- 4) Guide Type: Center Guide Side Guide
- 5) Construction: All Links Link & Spacer



Additional Comments: