

# RKO - Ramsey Knock Out Tool®



## Advantages

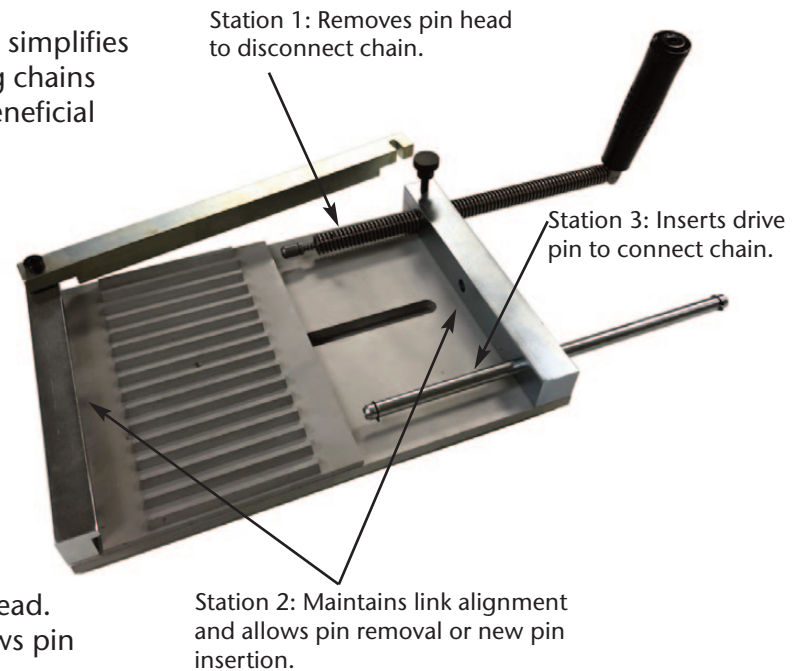
The RKO Tool, or “Ramsey Knock Out” Tool, greatly simplifies connecting and disconnecting all Ramsey conveying chains which use a single pin joint. The tool is especially beneficial with wear protected chains, including Allguard, Lifeguard, and All-Steel chains.

**Saves Time and Prevents Damage**  
When installing or replacing chains, the tool minimizes lost time and the chance of costly chain damage.

**A Durable Production Tool**  
RKO tools are designed and built to be used on the plant floor.

### Three Distinct Work Stations

- First station uses a ram screw to remove the pin head.
- Second station maintains link alignment and allows pin removal or new pin insertion.
- Third station provides for insertion of drive pin chain connector. Note: Optional drive pin connectors must be purchased separately.



The Ramsey Knock Out Tool® is patented in the United States and Europe.

## Available Only From Ramsey

## Options

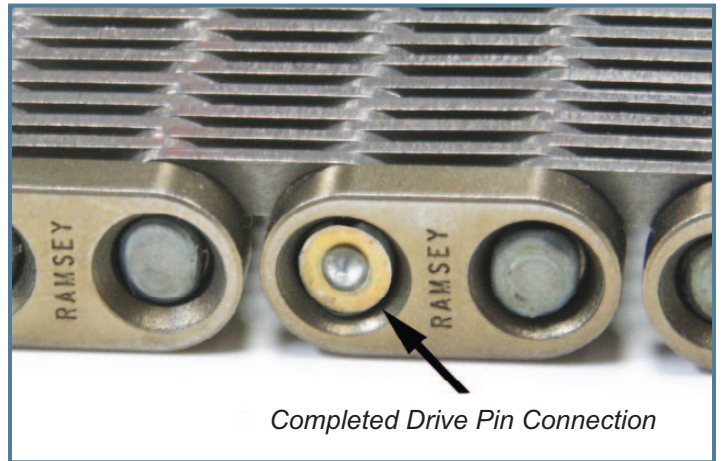
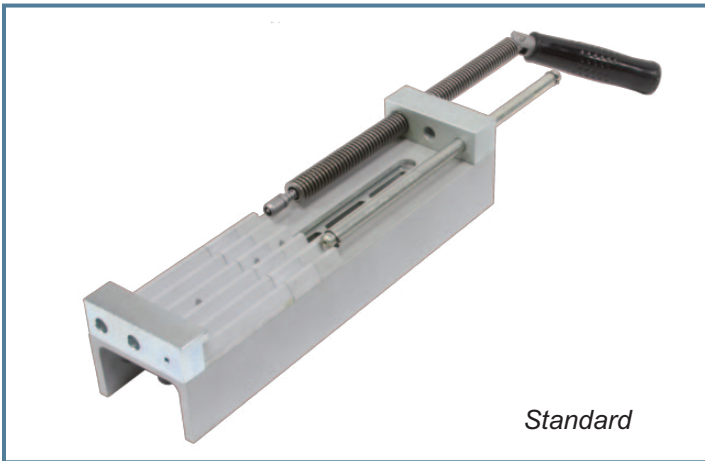
- Two available styles: Standard and Wide-Body
- Modular guide plates allow for many different chain widths and styles
- Replacement parts available



Wide-Body

continued on back

# Eliminates the Need for Damaging Hammering or Welding



## Quote Request Summary

Use this form for a quick cost estimate.

- 1) Style:  Standard  Wide-Body
- 2) Chain Type:  Ultralife  Allguard  Lifeguard  All-Steel
- 3) Overall Chain Width: \_\_\_\_\_ mm or \_\_\_\_\_ inches
- 4) Guide Type:  Center Guide  Side Guide
- 5) Construction:  All Links  Link & Spacer



Additional Comments: